



NOTES:

1. MATERIAL: PHOSPHOR BRONZE C5191, THICKNESS 0.12±0.02
2. PLATING

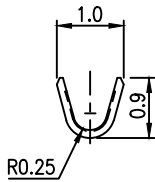
- : 50u" MIN. Ni Under Plated
150u" MIN. TIN ON CONTACT AREA.
- G: NICKEL 50u" MIN. Ni Under Plated
GOLD FLASH ON CONTACT AREA.
- L: 50u" MIN NICKEL
100u" MIN PURE TIN (LEAD FREE).

3. Q'TY: 15K pcs/roll..
4. PART NUMBER

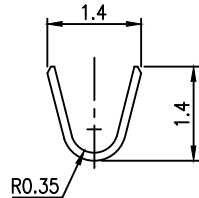
87214-WX

PLATING

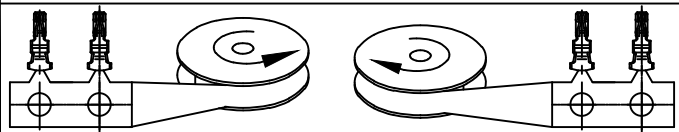
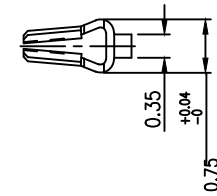
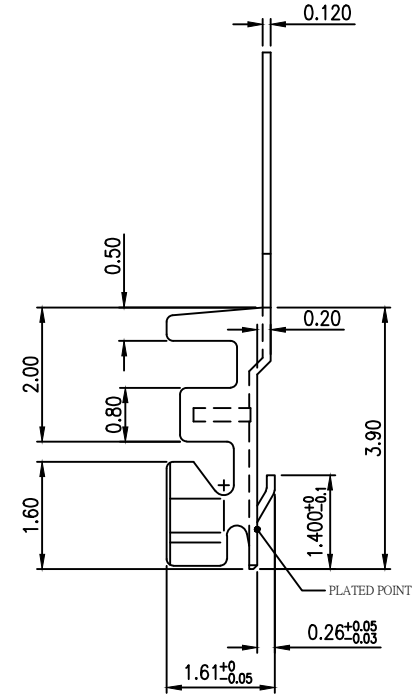
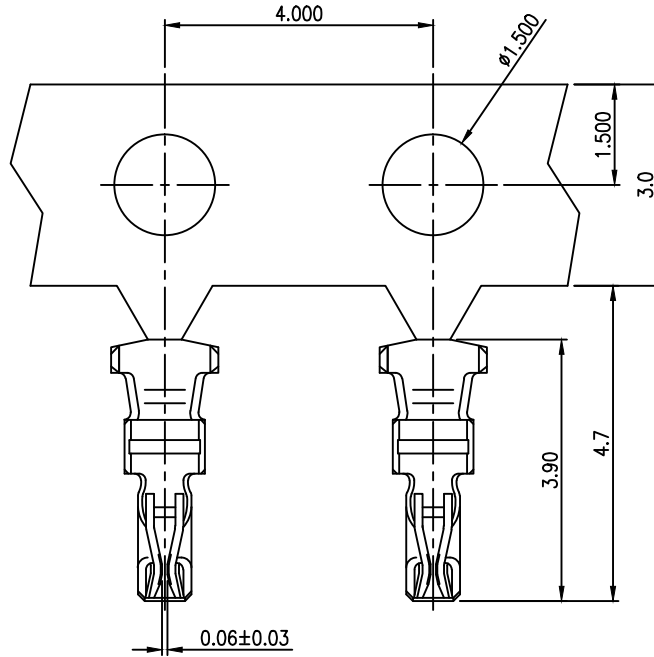
- : TIN-LEAD
- G: GOLD FLASH OVER ALL
- L: PURE TIN



WIRE BARREL



INSULATION BARREL



WIND OPERATION AFTER STAMPING AND BEFORE PLATING

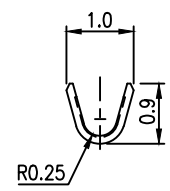
WIND OPERATION AFTER PLATING AND BEFORE ASSEMBLY

QUALITY SYMBOLS MAJOR Ⓢ CRITICAL Ⓢ	DRAWN BY YANJINXU	DATE 20/12/23		
	CHECKED BY XUZHIYONG	DATE 20/12/23		
GENERAL TOLERANCES (UNLESS SPECIFIED) X ±0.5 .X ±0.25 .XX ±0.15 .XXX ±0.1 ANGLES ±2°	APPROVED BY XUZHIYONG	DATE 20/12/23	TITLE 1.0 mm W-T-B TERMINAL	
	UNITS mm	SCALE 1:1		SIZE A4
	SHEET NO. 1 OF 2	REV N	RFQ NO. N/A	DWG NO. 87214-WX

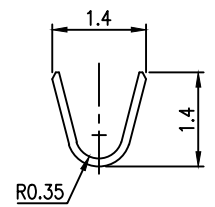


- NOTES:
1. MATERIAL: PHOSPHOR BRONZE C5191, THICKNESS 0.12±0.02
 2. PLATING
 - 50u" MIN NICKEL UNDER PLATING OVERALL
 - T: 10u" Min GOLD ON CONTACT AREA
 - C: 15u" Min GOLD ON CONTACT AREA
 - 3: 3u" Min GOLD PLATING .
 3. Q'TY: 15K pcs/roll..
 4. PART NUMBER
87214-WX

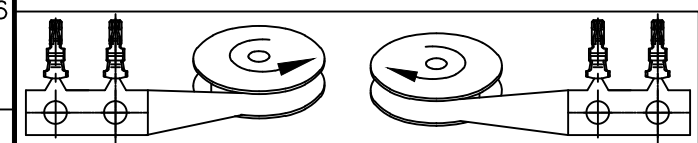
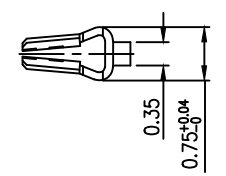
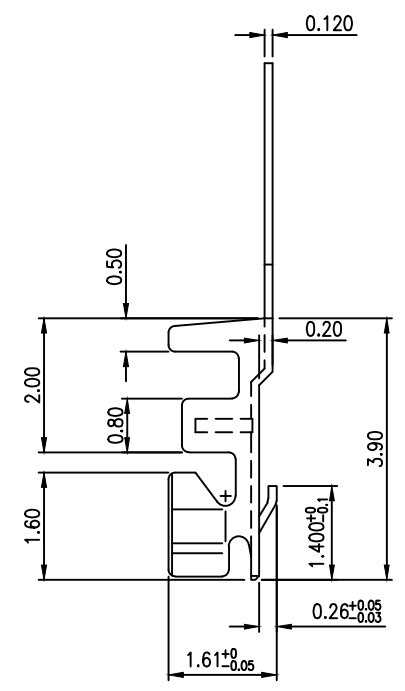
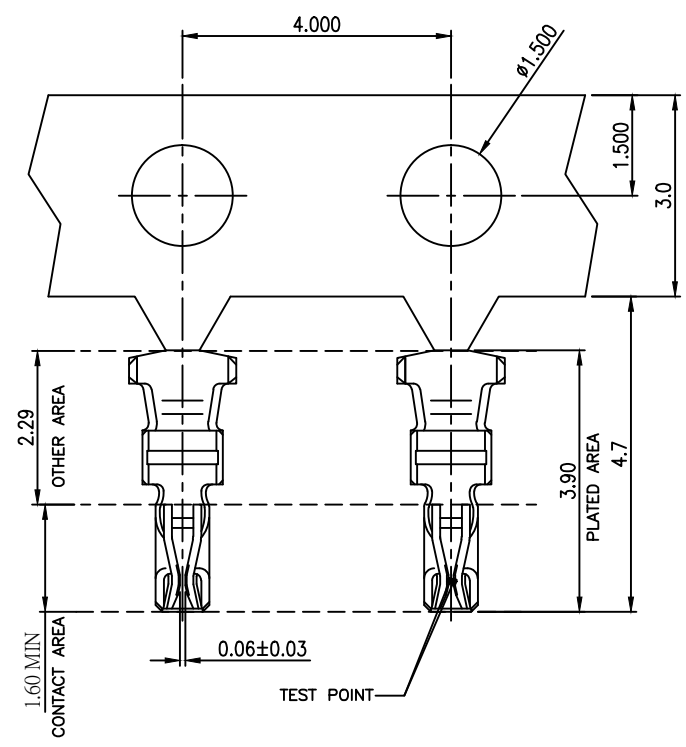
- PLATING
- T: 10u" Min GOLD ON CONTACT AREA
 - C: 15u" Min GOLD ON CONTACT AREA
 - 3: 3u" Min GOLD PLATING .
 - 1: 1u" Min GOLD ON CONTACT AREA
 - D: 30u" Min GOLD ON CONTACT AREA



WIRE BARREL



INSULATION BARREL



WIND OPERATION AFTER STAMPING AND BEFORE PLATING

WIND OPERATION AFTER PLATING AND BEFORE ASSEMBLY

QUALITY SYMBOLS	DRAWN BY	DATE	ACES ELECTRONICS			
MAJOR	YANJINXIU	20/12/23				
CRITICAL	CHECKED BY	DATE	TITLE			
GENERAL TOLERANCES (UNLESS SPECIFIED)	XUZHIYONG	20/12/23			1.0 mm W-T-B TERMINAL	
X ±0.5	APPROVED BY	DATE	UNITS	SIZE		
.X ±0.25	XUZHIYONG	20/12/23	mm		A4	N/A
.XX ±0.15	SCALE	SHEET NO.	1:1	2 OF 2	REV	DWG NO.
.XXX ±0.1	ANGLES				N	87214-WX